

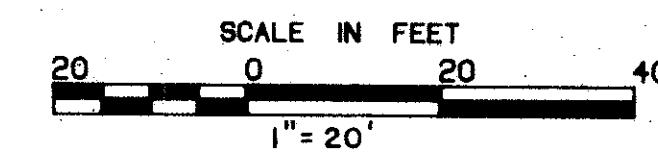
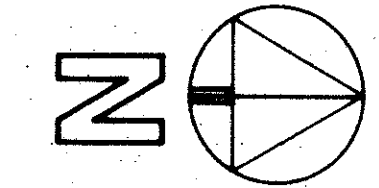
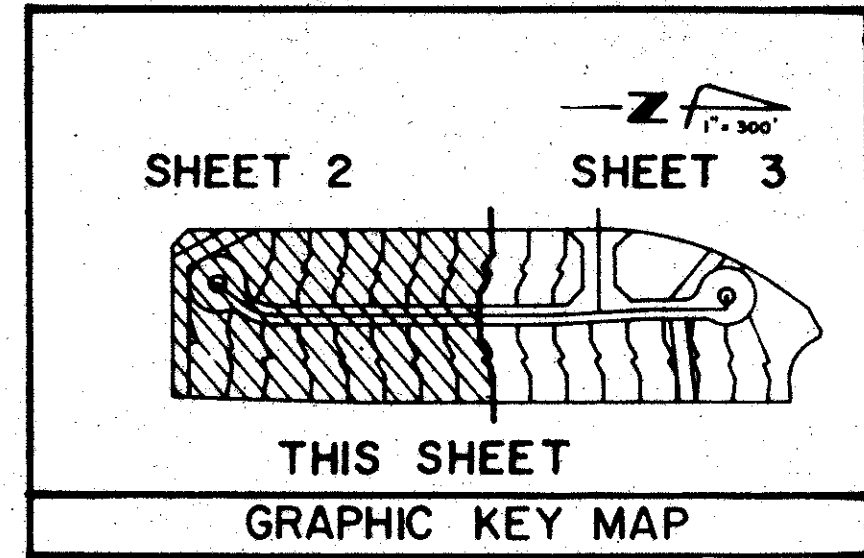
61/5

JUNE, 1988

# A PLAT OF RIVERWIND AT JONATHAN'S LANDING P.U.D.

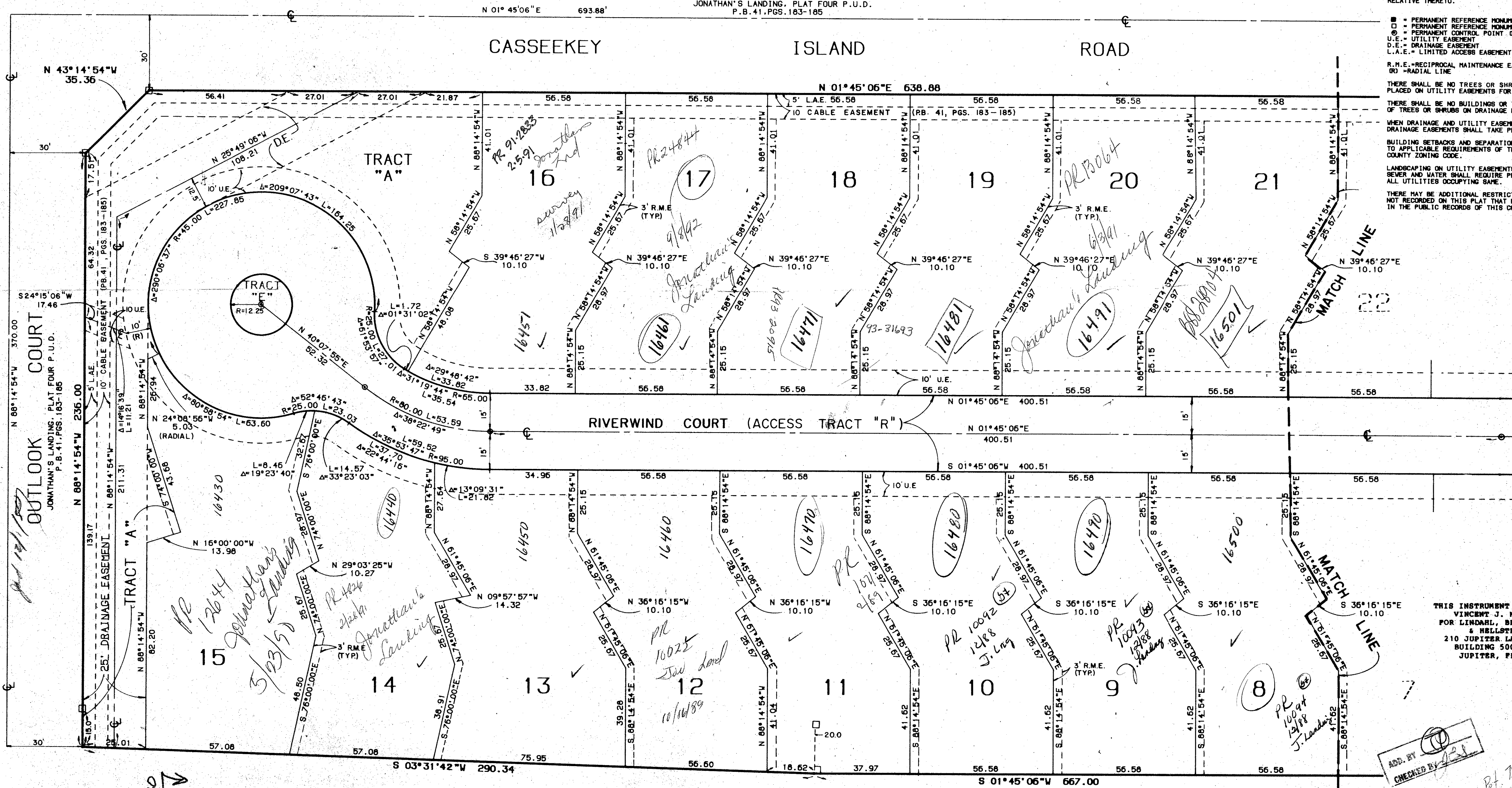
LYING IN SECTION 7, TOWNSHIP 41 S., RANGE 43 E., ALSO BEING A REPLAT OF PARCEL "M" JONATHAN'S LANDING PLAT SEVEN P.U.D., AS RECORDED IN PLAT BOOK 47, PAGES 51 AND 52, PUBLIC RECORDS OF PALM BEACH COUNTY, FLORIDA.

SHEET 2 OF 3



BEARING BASE: THE CENTERLINE OF OUTLOOK COURT IS TAKEN TO BEAR S 88° 14' 54" E AND ALL OTHER BEARINGS ARE RELATIVE THERETO.

- PERMANENT REFERENCE MONUMENT (P.R.M.) FOUND
  - PERMANENT REFERENCE MONUMENT (P.R.M.) SET
  - ⊙ PERMANENT CONTROL POINT (P.C.P.)
  - U.E. = UTILITY EASEMENT
  - D.E. = DRAINAGE EASEMENT
  - L.A.E. = LIMITED ACCESS EASEMENT
  - R.M.E. = RECIPROCAL MAINTENANCE EASEMENT OR RADIAL LINE
- THERE SHALL BE NO TREES OR SHRUBS PLACED ON UTILITY EASEMENTS FOR WATER AND SEWER.
- THERE SHALL BE NO BUILDINGS OR THE PLANTING OF TREES OR SHRUBS ON DRAINAGE EASEMENTS.
- WHEN DRAINAGE AND UTILITY EASEMENTS CROSS, DRAINAGE EASEMENTS SHALL TAKE PRECEDENCE.
- BUILDING SETBACKS AND SEPARATION SHALL CONFORM TO APPLICABLE REQUIREMENTS OF THE PALM BEACH COUNTY ZONING CODE.
- LANDSCAPING ON UTILITY EASEMENTS INCLUDING THOSE FOR SEWER AND WATER SHALL REQUIRE PRIOR APPROVAL OF ALL UTILITIES OCCUPYING SAME.
- THERE MAY BE ADDITIONAL RESTRICTIONS THAT ARE NOT RECORDED ON THIS PLAT THAT MAY BE FOUND IN THE PUBLIC RECORDS OF THIS COUNTY.



SUBVISION: Riverwind  
 SUPP: 6  
 FILED: Jonathan's Landing  
 DATE: 5/23/88  
 BY: J. Landry  
 RM 74-195  
 33468  
 7/11/83  
 TAZ 45

SEE SHEET 3 OF 3

THIS INSTRUMENT WAS PREPARED BY:  
 VINCENT J. NOEL, P.L.S.,  
 FOR LINDAHL, BROWNING, FERRARI  
 & HELLSTROM, INC.  
 210 JUPITER LAKES BOULEVARD  
 BUILDING 5000, SUITE 104  
 JUPITER, FLORIDA 33458

ADD. BY  
 CHECKED BY

FW 3  
 JONATHAN'S LANDING  
 PLAT SEVEN  
 P.B. 47, PGS. 51 & 52

LINDAHL, BROWNING, FERRARI & HELLSTROM  
 Consulting Engineers, Planners & Surveyors  
 BLDG. 5000, SUITE 104 10 CENTRAL PARKWAY  
 JUPITER, FL 33458 SUITE 420  
 STUART, FL 33497